

KF Valves Mallard Control Hydroseal Contromatics

Product Summary



Continuously Improving
Flow Control

About Circor Energy

CIRCOR Energy is a global manufacturer of highly engineered valve and pipeline products that continuously develops precision technologies to improve our customers' ability to control the flow of the world's natural resources — from sub-sea to land, and in severe environments.

For over 60 years, CIRCOR Energy and its market-leading brands have been delivering customer-focused, product and service solutions for the world's most demanding energy applications – with an emphasis in the upstream oil and gas, midstream oil and gas, and petrochemical processing industries.

For more information about the products featured within this summary, or our entire portfolio of flow control products, please contact any of our offices listed on the back cover of this document, or visit us at www.circorenergy.com.



■ KF Valves

Ball Valves | Floating

Threaded & Grooved-End Floating Ball Valves Series A, AH, C, CH, CXH, CA, CAH, CB, CBH, E, EH & EC	5
Commodity Ball Valves Series HC-730, 740 & 710, HS-810 & 820 & HB-600	6
Threaded Bolted Body, Series AF, AFH, CF, CFH & CFXH	6
Series B, BH & W	7
Flanged End, Series F/FE	7

Ball Valves | Trunnion Mounted

3-Piece -Series P3/M3, 2-Piece -Series FA/FAE, Welded body -Series WB, Top Entry -Series T/TE	8
--	---

Check Valves

Wafer Series 10, 12, 18, 20/22, Threaded Series 31, Flanged Series 35, Piston Series 50, Ball Series 60	9
--	---

Needle Valves & Isolator Valves

Needle Valve, Packed & O-Ring Style	10
Isolator Valve, Threaded & Flanged, Series AIV	10

Butterfly Valves

Wafer & Lug Series BG, One-Piece Series 2200	11
--	----

Gate, Globe & Check Valves

Forged & Cast Steel Gate, Globe & Check Valves	12
--	----

Specialty Ball Valves

Series K1 & K3	12
--------------------------	----

■ Mallard

Liquid Level Switches, Controllers & Accessories

Model 3100E, 3100P/3100P1, 3150 & 3900	14
Model 3200 & 3201, Model 3208-D, 3208-H, 3208-V & 40MU	15

Valves & Gauges

Control Valves, Model 5100 & 5127/5126	16
Control Valves, Model 5400, 5450, 5500 & 5520	16-17
3-Way Control Valves, Model 5300 & 5530/5540	17
Level Gauge, Model 3520	18
Gauge Valve, Model 3500/3510	18
Piston Check Valve, Model 5800	18

Pressure Controllers

Pressure Controllers, Model 3300 & 3350/3360	18
--	----

Pressure Regulators

Pressure Regulators, Model 5607, 5646, 5600, 5660/5670 & 5601/5601NF	19
--	----

Hydroseal

Safety Relief & Pilot Valves

Series 1500 Threaded & Flanged Safety Relief Valves	21
Series 2500 Flanged High Capacity Safety Relief Valves	21
Series 1200 & 1400 Safety Relief Valves & Series 3500 Pilot Operated Relief Valves	21
Series 3500 Pilot Operated Relief Valves	21
Series 1-4 Ball & Seat Threaded Safety Relief Valves	22
Series 5-8 Ball & Seat Safety Relief Valves	22
FT, HC (Air) & HD (Liquid) Series Threaded Flanged Safety Relief Valves	22
Bronze Safety Relief Valves	22
High Pressure Ball Check Valves, and "Y" Strainers & Pressure Monitor Plugs and Probe	22

Contromatics

Ball Valves

Series 6100-M3, Series 6000-M3	24
Series 7000-M3, Series 8000-M3, Series 7100-M3 & 8100-M3, Series 7200-M3, Series 8200-M3 & Series 3200-M3	25
Series 7700, 8700 & 3700 and Series 7300 & 8300	26
Series 7400 & Series 8400	27
Series 1500 & 2500 and Series 1800 & 2800	28
Series 1500-S1 & 2500-S1	29

Pneumatic & Electric Actuators

Series PA/PAS M5, Series 92 & Series EA	30
---	----

Automation Accessories

BMS Solenoids & PMV Positioners	31
LS Model Limit Switch & Contromatics Limit Switch	31

Our Quality Commitment

We're dedicated to providing our customers with technically superior products that are designed, manufactured & tested to the exacting standards of various qualifying authorities.

Other additional non-destructive or destructive examination may be performed to customer requirements or specifications.

When it comes achieving customer and industry goals for reliability, durability and structural integrity, CIRCOR Energy delivers.

KF Valves

Product Summary



KF Threaded & Grooved-End Floating Ball Valves

Features

- Full & Reduced Port
- Threaded & Grooved End Connections
- External Grease Fitting for Stem Journal Lubrication
- Weather Seal (Stem)
- Fire Safe Designed & Tested to: API 607
- Blowout Proof Stem Design
- Heavy Duty Flatted Stem Design
- Metal-To-Metal Fire Safe Sealing
- Integral Locking Device
- Manual Operation Handle

Optional Features

- Antistatic Device
- Actuation & Square Nut Assemblies
- Enduro-Bond™ Coating for Corrosion Resistance
- Valves Specified with StainlessSteel Trim Meet NACE MR0175/ISO 15156
- Anti-Freeze Design (Optional)



Series A

Series A & AH

Ductile Iron Body

Series A-1"FP-4"RP, 1000-1500 psi

Series AH-1"FP-3"RP, 1500-2000 psi



Series C

Series C, CH & CXH

Carbon or Stainless Steel Body

Series C-1"FP-4"FP, 1000-2500 psi

Series CH-1"FP-4"FP, 2000-3000 psi

Series CXH-1"FP-2"RP, 5000 psi

Series CA & CAH

Carbon Steel Body

2-3/8"EUE X 2 1/16" Bore & 2 7/8"EUE X 2 9/16" Bore

Series CA-1000-2000 psi

Series CAH-3000 psi



Series CB

Series CB & CBH

Nickel Aluminum Bronze Body

1"FP-2"FP

Series CB-1000-2500 psi

Series CBH-3000 psi



Series E

Series E, EH & EC

Series E-Ductile Iron Body, 2"RP-4"RP, 750 CWP

Series EH-Ductile Iron Body, 2"RP-4"RP, 1000 CWP

Series EC-Stainless Steel Body, 2"RP-3"RP, 600 psi

Note: Padlocks not included. Consult Factory.

KF Commodity Ball Valves

Features

- > 2-Piece & Unibody, Cast, Investment Cast & Bar Stock Body
- > Designed for Hydraulic Hook-Ups, Offshore Applications, Well Heads, Production Lines, Petroleum & Chemical Plant Applications
- > Reinforced PTFE Seats
- > Blowout Proof Stem
- > Optional Locking Device
- > Fire Safe Designed & Tested to: API 607 4th Edition (Only HC-710 & HS 810)

Series HS-820



Series HC740



Series HB610



Series HC-730, 740 & 710, HS-810 & 820 & HB-600

HC-730-Carbon Steel Unibody, 1/2"-2", 1500-2000 CWP

HC-740-Carbon Steel 2-Piece, 1/4"-2", 1500-2000 CWP

HC-710/HS-810-Carbon & Stainless Steel Unibody, 1/4"-2", 2000 CWP

HS-820-Stainless Steel Seal Welded

2-Piece, 1/4"-2", 2000 CWP

HB-600-Bronze 2-Piece

1/4"-4", 400-600 CWP

KF Floating Threaded Bolted Body Ball Valves

Features

- > Full & Reduced Port
- > Threaded End Connections
- > Bolted Body Adapter Connection
- > External Grease Fitting for Stem Journal Lubrication
- > Weather Seal (Stem)
- > Fire Safe Designed & Tested to: API 607
- > Blowout Proof Stem Design
- > Heavy Duty Flatted Stem Design
- > Metal-To-Metal Fire Safe Sealing
- > Integral Locking Device
- > Manual Operation Handle

Optional Features

- > Antistatic Device
- > Actuation & Square Nut Assemblies
- > Enduro-Bond™ Coating for Corrosion Resistance
- > Valves Specified with Stainless Steel Trim Meet NACE MR0175/ISO 15156
- > Anti-Freeze Design (Optional)

Series AF



Series AF & AFH

Ductile Iron Body

Series AF-2"RP-4"RP, 1000-1500 psi

Series AFH-2"RP-3"RP, 2000 psi

Series CFXH



Series CF, CFH & CFXH

Carbon Steel Body

Series CF-2"RP-4"FP, 1500-2500 psi

Series CFH-2"RP-4"FP, 3000 psi

Series CFXH-2"RP & 2"FP, 5000 psi

KF Threaded End Floating Ball Valves

Features

- > Full & Reduced Port
- > Threaded, Socked Weld and Male End Connections Available
- > Packed (Stem)
- > Blowout Proof Stem Design
- > Heavy Duty Flatted Stem Design
- > Metal-To-Metal Fire Safe Sealing
- > Manual Operation Handle

Optional Features

- > Antistatic Device
- > Actuation Assemblies
- > Enduro-Bond™ Coating for Corrosion Resistance
- > Valves Specified with StainlessSteel Trim Meet NACE MR0175/ISO 15156

Series B



Series B & BH | 3-Piece Design

Carbon, Stainless or Low Temp Carbon Steel Body

Series B-1/4"FP-2"RP, 2250-3000 psi

Series BH-1/4"FP-1"FP, 5000 psi

Series W



Series W

Carbon or Stainless Steel Body

1/4"FP-2"RP, 1500-2000 CWP

KF Flanged End Floating Ball Valves

Features

- > NACE MR0175/ISO 15156 (SS Ball /Stem Configuration)
- > Weather Seal (Class 600 & Higher)
- > Actuator Mounting Pad (4 Bolt Machined)
- > Fire Safe Designed & Tested to: API 607* (O-Ring & Graphite)
- > API 6D Monogrammed (O-Ring & Graphite)
- > Secondary Metal-to-Metal Sealing
- > Full Rated Bi-Directional Dead End Service
- > Antistatic Device (Class 150 & 300)
- > Lockable Handle
- > O-Ring Design (Std.)
- > Graphite or Teflon® Packing (Optional for Class 150 & 300)
- > Anti-Freeze Design (Optional)

*Not applicable to Teflon® packed.

Series F/FE



Series F/FE

Carbon, Stainless or Low Temp Carbon Steel Body

1"FP-12"RP, ANSI Class 150, 300, 600, 900 & 1500

KF Trunnion Supported Ball Valves

Features

- > Double Block & Bleed
- > Blowout Proof Stem Design
- > Corrosion Resistant Low Friction Bearings
- > Inconel Wave Springs Assist in Low Pressure Sealing
- > Fire Safe Designed & Tested to: API 6FA, API 607, ISO 10497
- > Stainless Steel Injection Fittings for Emergency Stem or Seat Sealant & Lubrication Maintenance
- > Antistatic Grounding Between Ball, Stem & Body
- > NACE MR0175/ISO 15156
- > Integral Topworks Direct Mounting Pad
- > 8" & Larger Valves are Equipped with Lifting Lugs*
- > Bi-Directional
- > Double Piston and Self-Relieving Designs Available
- > API 6D

**Not applicable for series T/TE and FA/FAE.*

Series P3/M3



Series P3/M3 | 3-Piece Design

3-Piece Carbon Steel, Low Temp
Carbon Steel or Stainless Steel Body

14"FP-24"FP, ANSI Class 150 & 300

2"FP-36"FP, ANSI Class 600

2"FP-24"FP, ANSI Class 900

2"FP-12"FP, ANSI Class 1500 & 2500

Series WB/WM



Series WB/WM

Welded Body, Internal Stops

Low Temp Carbon Steel, Carbon Steel Body

8"FP-48"FP ANSI Class 300 & 600

Series FA/FAE

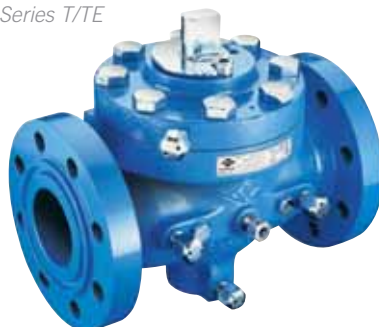


Series FA/FAE | 2-Piece Design

2-Piece Carbon Steel, Low Temp
Carbon Steel or Stainless Steel Body

2"FP-14"RP, ANSI Class 150 & 300

Series T/TE



Series T/TE Top Entry (Inline Repairable)

Top Entry One-Piece Carbon Steel, Low
Temp Carbon Steel or Stainless Steel Body

2"FP-16"FP, ANSI Class 600

2"FP-12"FP, ANSI Class 900, 1500 & 2500

2 1/16"FP-7 1/16"FP, API 2000, 3000 & 5000

KF Check Valves

Features

- Long Pattern
- Short Pattern
- Single Disc
- Internal Spring Assist
- No Spring Assist
- External Spring Assist
- Air Cushion

Specifications

- ANSI B16.34
- ANSI B16.5
- API 6D (Monogrammed)
- Fire Safe Designed & Tested to: API 607
- API 594
- API 6A
- API 6FD
- NACE MR0175/ISO 15156

Certified

- CE Mark (Optional)

Series 10



Series 10 & 10S

2"-72", ANSI Class 150, 300, 600, 900, 1500 & 2500; API 2000, 3000 & 5000

Wafer Long Pattern Single Disc, Internal Spring Assist

NACE MR0175/ISO 15156 & CE Mark

Series 12



Series 12

2"-24", ANSI Class 150, 300, 600, 900 & 1500

Wafer Short Pattern

Single Disc, No Spring Assist

Series 18



Series 18

4"-12", ANSI Class 125 & 150

Wafer Style, External Spring Assist w/Back Flush Lever

ANSI B16.1 & ANSI B16.5

Series 20



Series 20 & 22

2"-72", ANSI Class 125 & 150

Wafer Semi-Lug Single Disc External Spring Assist, Air Cushion (Series 22 only)

ANSI B16.1 & ANSI B16.47

Series 31



Series 31

1"-4", MOP 300, 750, 2200, 3000 & 5000 psi

Threaded and Grooved Ends, Single Disc, No Spring Assist

NACE MR0175/ISO 15156

Series 35



Series 35

2"-24", ANSI Class 150, 300, 600, 900, 1500 & 2500; API 2000, 3000 & 5000

Flanged End, Weld-End, Long Pattern, Single Disc, Internal Spring Assist, No Spring Assist

ANSI B16.34, API 6A, API 6D (Monogrammed), API 594, Fire Safe Designed & Tested to API 607 4th Edition, CE Mark, NACE MR0175/ISO 15156

Series 50



Series 50

2"-8", ANSI Class 300, 600 & 900

Spring Assisted Closure, Precisely Metered Piston Orifice

ANSI B16.34 & ANSI B16.5

Series 60



Series 60

Threaded Horizontal or Vertical "Upflow" Installation. Gravity Return Eliminates Need for Ball Return Spring.

1" & 2" MOP 1000-5000 psi

KF Needle Valves

Features

Packed Bonnet Style

- Available in Hard & Soft Seat for Pressures Up to 10,000 psi
- Stainless Steel Stem & Teflon® or Grafoil® Packing
- Optional Grafoil® Packing for Temperatures Up to 1000°F
- NACE MR0175/ISO 15156 Conformance Available

O-Ring Style

- Accurate Regulation at Pressures Up to 6000 psi for Soft Seat & 10,000 psi for Metal Seat
- Temperature Limit 400°F
- NACE MR0175/ISO 15156 Conformance Available



Packed Bonnet & O-Ring Style Needle Valves

Carbon or Stainless Steel Body

Packed Bonnet -1/4"-1" NPT, Up to 10,000 psi

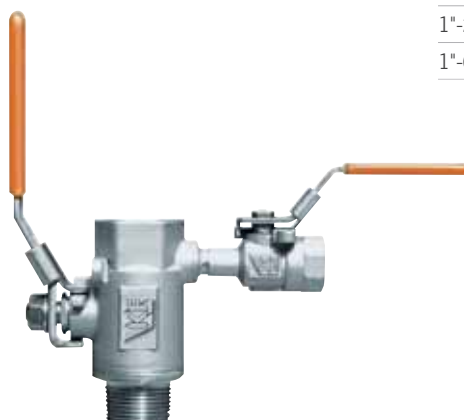
O-Ring -1/4"-1/2" NPT, Soft Seated, Up to 6000 psi, Metal Seated, Up to 10,000 psi

KF Isolator Valves

Features

- Enables Isolation of the Safety Relief Valve from the Pressure Source for Relieving Set Point Verification Without Shutdown or Removal
- Latch-Lock Handles on Isolator & Test Port Valve
- Seal Welded Body & Test Port Valve

Isolator Valve



KF-AIV Isolator Valves

Carbon or Stainless Steel Body

1"-2" NPT, 1500-5000 psi

1"-6" ANSI Flanged, 150-1500 psi

KF Butterfly Valves – Series BG

Features

- Installs Between ANSI 125 or 150 Flanges
- PTFE Bushings 2"-12"
- Bronze Bushings 14"-36"
- Lugged Style Valves Suitable for Bi-Directional Dead End Service at Full Rated Pressure
- Seats Available in Buna-N & Viton® A
- One-Piece Shaft Through 24"
- 29" HG Vacuum Rating
- ISO 5211 Topworks (2"-12")

Specifications

- MSS SP-67
- API 609

Series BG
Wafer Style



Series BG
Lug Style



Series BG

2"-36", Wafer or Lug Ductile Iron Body

2"-12", 200 psi

14"-36", 150 psi

KF Butterfly Valves – Series 2200

Features

- Lockable Handle, Easily Locked in Full Open or Full Closed Position
- Maximum Size Stem Diameter Offers Greater Strength & Increases the Life of the Valve
- Standard Polished Bronze Disc with Replaceable Buna-N O-Ring
- Optional Fluoroelastomer O-Ring Material is Available
- Disc & Stem O-Rings are Easily Replaced in the Field
- One-Piece Cast Iron, Nickel Plated Body for Corrosion Resistance
- Trim for Salt Water is Available

Series 2200



Series 2200

One-Piece Cast Iron Body (Electro Plated Nickel)

2"-6", 200 WOG

KF Gate, Globe & Check Valves

Forged Steel

A Wide Range of Steel Materials

Including ASTM A105N A350-LF2

A182-F11-F5-F304-F316 & F316L

1/4"-2", ANSI Class 800-2500

Forged Steel Valves



Cast Steel

A Wide Range of Steel Materials

Including ASTM A216-WCB

A352-LCC, A217-C5 & A351-CF8M

2"-48", ANSI Class 150 -2500

Cast Steel Valves



KF Specialty Ball Valves

Features

- > NACE MR0175/ISO 15156
- > Mounting Pad for Automation
- > Locking Handle

Series K1



Series K1

One-Piece Stainless Steel

Investment Cast Body

1/4"-2" NPT, 2000 psi

Series K3



Series K3

Rugged 3-Piece

Forged Steel Design

1/4"-2" NPT

3000 & 6000 psi

A105 & A350-LF2 Material

Mallard Control Product Summary



Mallard Liquid Level Switches

Features

- Maximum Working Pressure to 2000 PSIG
- Maximum Temperature to 400°F
- SPDT or DPDT Options
- Optional External Chamber Mounting



Model 3100E Electric Level Switch

Float-actuated, compact electric level switch for use as a high or low level alarm. Available in either Carbon Steel or Stainless Steel.

Features

- Maximum Working Pressure to 2000 PSIG
- Maximum Temperature to 400°F
- 2-Way or 3-Way Switch Options
- Optional External Chamber Mounting

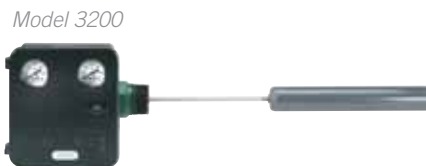


Model 3100P/3100P1 Pneumatic Level Switch

Float-actuated, compact pneumatic level switch for use as a high or low level alarm. Available in either Carbon Steel or Stainless Steel.

Features

- Pneumatic Pilots (Snap, Throttle, ECO Pilot-non bleed)
- Wide Variety of Displacer Sizes & Materials Offered
- Right or Left-hand Mount
- Optional SPDT or DPDT Electric Switches
- Optional Wetted Materials Meet NACE MR0175/ISO 15156



Model 3200

Rugged and versatile pneumatic liquid level controller with a sealed weatherproof case and field reversible action (direct or reverse acting); ideal for offshore applications.

Model 3201

Pneumatic liquid level controller with non-sealed case, primarily for onshore applications.

Features

- Hammer Nut Closure for Quick & Easy Installation & Removal
- Built-in Sight Glasses for Local Liquid Level Indication



Model 40MU Hammer Union Connection

Hammer nut closure designed to be used in conjunction with the Model 3200/3201 liquid level controller. The Mallard union also incorporates compact sight glasses for liquid level indication at the entry point of the level control into the vessel.

Mallard Liquid Level Controllers and Accessories

3208-H Features

- Compact Design for Limited Spaces
- Threaded Level Controller & Vessel Connections

3208-V Features

- Rotatable Head Design
- Available with Threaded or Flanged Controller & Vessel Connections
- NACE MR0175/ISO 15156 Compliance Option



Model 3208-H Horizontal-Style Chamber Model 3208-V Vertical-Style Chamber

Designed to be used with the 3200/3201 liquid level controller in applications where internal obstructions prevent direct installation of the level control, or to isolate the level control from fluid turbulence within the vessel.

Features

- Multiple Vessel Connection Sizes & Flange Ratings (ANSI 150 Through ANSI 1500)
- Screwed or Flanged Level Controller Connections
- NACE MR0175/ISO 15156 Compliance Option



Model 3208-D Dome-Style Chamber

Designed to be used with the 3200/3201 liquid level controller in applications where the vessel connection is located on top of the vessel.

Features

- Electric or Pneumatic (Non-Bleeding Pneumatic Snap Acting/SPDT or DPDT)
- Field Reversible Switch Action
- Standard Stainless Steel Internals Suitable for Marine Environments
- Optional Wetted Materials Meet NACE MR0175/ISO 15156



Model 3900 Liquid Level Controller

Pneumatic snap-acting or electric SPDT or DPDT. high/low level switch designed for level safety systems or other level control requirements.

Features

- 2" Threaded or 4" Union Connections
- Choice of Float Size & Float Arm Extension Length
- Cost Effective



Model 3150 Pneumatic Liquid Level Switch

Pneumatic control device designed for low pressure applications. The Model 3150 is designed with few moving parts to provide consistent, dependable service.

Mallard Control Valves

Features

- Stainless Steel Trim
- Threaded End Connections
- NACE MR0175/ISO 15156 Compliance Option
- Maximum Operating Pressure 2,220 PSIG @ 200°F



Model 5100

Model 5100 "Freezeless" Control (Dump) Valve

Perfectly suited for high pressure fluid control in the oil and gas industry for separators and other process vessels. Body design allows the plug and seat to be constantly submerged in the process media, giving the valve its "Freezeless" characteristic.

Features

- Adjustable or Nonadjustable Actuators
- Stainless Steel or Tungsten Carbide Trim
- Lightweight Design Enables Quick & Easy Installation with Minimal Labor
- Marine Option for Harsh Environments with Corrosion & Salt Buildup



Model 5127

Model 5127/5126 "Freezeless" Control (Dump) Valve

"Freezeless" dump valve designed for fluid control in oil and gas separators, gas compressor scrubbers and other process vessels. The valve body screws directly into the vessel and submerges the plug and seat in the process fluid.

Features

- Stainless Steel Trim Material Options
- Variety of End Connections
- Choice to Set Actuator to Direct or Reverse Acting



Model 5300

Model 5300 3-Way Control Valve

3-way, 2-position control valve designed to blend two inlet flows into one outlet or to divide one inlet flow into two outlets. The 5300 can withstand hard to handle applications such as system switching when high differential and static pressures are prevalent providing positive shut-off.

Features

- Rugged Steel Construction
- Available in Flanged, Threaded or Welded Connections
- Bi-directional Flow, can be Installed for "Flow Up" or "Flow Down" Operation
- Multiple Trim, Size & Material Options
- Marine and/or Sour Gas Service Option (Available)
- Simple Maintenance & Installation



Model 5400

Model 5400 Open Yoke Control (Dump) Valve

Designed to meet high pressure and erosive applications and ideally suited for pressure, level, temperature, and flow control applications on separators, scrubbers, wellheads and other oilfield equipment.

Features

- Flexible to Meet a Wide Variety of Applications
- Hardened Trim (Available)
- All Model 5400 Features are Applicable



Model 5450

Model 5450 Close-Coupled Control (Dump) Valve

Close-coupled design allows installations where space is limited. Available in globe, tee, or angle body configurations. Similar to the Mallard Model 5400.

Mallard Control Valves & 3-Way Control Valves

Features

- Engineered with Wide Flow Passages for Maximized Flow Capacities
- Equal Percent, Linear or Quick Opening Flow for Cage Control
- Modified Percent for Plug Control
- Anti-cavitation or Noise Abatement Trim Sets
- Raised Face, Ring Type Joint or Female Threaded End Connections
- Spring-loaded Packing
- Excellent Shut-off Performance with Zero Leakage (ANSI Class VI) Achieved with Soft Seat Trim Option

Model 5500



Model 5500 Control Valve

Suited for throttling or on/off control of gas, liquid or steam. Can be used over a broad range of pressure drops and temperatures for reliable accurate control.

Features

- Rugged Construction
- Optimized Flow Path
- Equal Percent, Linear, Quick Opening (On/Off)
- Anti-cavitation, Noise Abatement & Modified Percent Trims Available
- Balanced Trim Design

Note: All Model 5500 Features are applicable

Model 5520



Model 5520 Control Valve

Durable and reliable control valve designed for throttling or on/off control of non-lubricating, viscous, or other hard to handle fluids. Used over a broad range of pressure drops and temperatures.

Features

- Available w/Balanced or Unbalanced Cage-guided Trim
- Models are Available in a Variety of Integral End Connection Styles
- Application Flexibility for Piping Designs

Model 5530

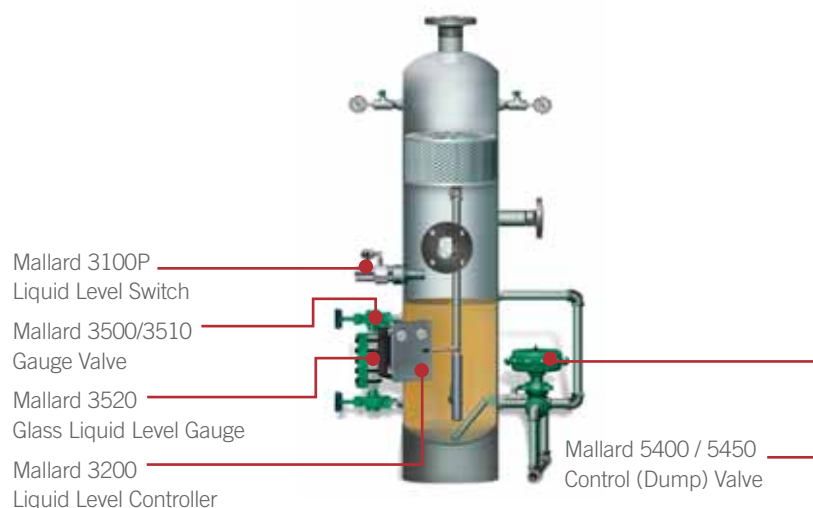


Model 5530/5540 3-Way Control Valve

3-way control valve designed for throttling or on/off service in converging (blending) or diverging (flow splitting) applications.

Available with Common Part on Bottom (5530) or on Left (5540)

Oil/Water Separator Level Control



Gas Compressor Scrubber With Internal Blowcase

This is a fully dressed scrubber with an internal blowcase. It uses the Mallard 3100P for a high liquid level switch which sends a signal to the Mallard 5400/5450 dump valve.

The Mallard 3200 liquid level controller maintains the proper liquid level in the internal blowcase along with the Mallard 3520 sight glass for visual inspection. Some manufactures and/or packagers prefer this arrangement, scrubber with internal blowcase, to allow more area on a skid mounted unit.

Mallard Level Gauges & Gauges

Features

- All Gauges Tested to 1.5 Times Rated Pressure at 100°F
- Available in Reflex or Transparent Styles
- Wetted Parts Conform to NACE MR0175/ISO 15156
- Optional 316 SS Bolts & Nuts, Plus 3-Coat Paint System for Optimal Protection in Corrosive Environments

Model 3520



Model 3520 Liquid Level Gauge

Rugged flat glass gauge for liquid level indication. Standard construction includes a solid one-piece chamber machined from bar, forged steel covers, alloys steel bolts and nuts, and tempered glass.

Features

- Union Gauge Connection Enables Gauge Removal Without Removing the Gauge Valves
- Stainless Steel Ball Check Located Upstream of the Seat, Which Instantaneously Shuts Off Flow in Case of Gauge Glass Breakage
- NACE MR0175/ISO 15156 Option

Model 3500



Model 3500/3510 Gauge Valve

Recommended for use with Mallard Model 3520 liquid level gauges, and is compatible with all armored flat glass liquid level gauges.

Mallard Piston Check Valves

Features

- Non-slamming Piston
- Simple Maintenance
- Smooth Opening
- NACE MR0175/ISO 15156 Option

Model 5800



Model 5800 Piston Check Valve

Optimized for the prevention of gas or liquid backflow. Common applications for this valve are gas and liquid pipelines, air or gas compressors, production leases, or safety systems. A variety of available end connections makes this piston check valve adaptable to almost any application.

Mallard Pressure Controllers

Features

- Field Reversible Controller Action
- Single Knob Adjustment
- Rugged Design
- Flexible Mounting Options

Model 3300



Model 3300 Pneumatic Pressure Controller

This pressure controller, used in conjunction with a control valve, make up a complete control loop which reacts automatically to changes occurring in a process and provides precise control within a set range.

Features

- Wide Range of Bourdon Tubes
- Low Air (Gas) Consumption
- Sour Service Capability
- Field Reversible
- Vibration Resistance

Model 3360



Model 3350/3360 Pressure Controller

Provides pressure control in proportional only (Model 3350) and proportional plus reset (Model 3360) configurations. Preferred by production operators and technicians worldwide.

Mallard Pressure Regulators

Features

- Applicable for Sweet or Sour Gas Services
- Available in Ductile Iron or WCC Carbon Steel
- Excellent Control at Low Pressure Settings
- Variety of Flow Capacities
- Flanged Connections (Available)

Model 5600



Model 5600 Pressure Regulator Model 5600R Relief Valve

Spring-loaded, self-operated pressure regulator built to withstand the most difficult processes and environments and offered in high or low pressure services.

Features

- Self-relieving
- Low Drop at High Flow
- Variety of Mounting Options
- Corrosion-resistant Construction
- Superior Regulation Characteristics
- Excellent Stability & Repeatability
- Built-in 40 Micron Filter & Dripwell (5601 Only)

Model 5601



Model 5601/5601NF Air Set Regulator

Rugged, adjustable air regulator designed for instrumentation and general purpose. Careful design and quality materials throughout assure long, trouble-free operation in the most difficult industrial environments.

Features

- High Flow Capacity (Up to 80 SCFM)
- Simplified Maintenance
- Sensitive
- Stable Output, Low Noise

Model 5607



Model 5607 High Flow Pressure Regulator

Designed for applications requiring substantial flow capacity and accurate pressure controls. A balanced poppet valve, utilizing a rolling diaphragm, ensures constant output pressures even during wide supply pressure variations. An aspirator tube, which adjusts the air supply in accordance with the flow velocity, accurately maintains the stability of the regulated pressure. The 5607 is an accurate and reliable high flow capacity regulator designed to give millions of cycles.

Features

- Union Connection Between Diaphragm Case & Body Allows Easy Access to Trim Parts
- Wide Range of Flow Capacities
- Available with Ductile Iron or Steel Body
- Tight Shut-off (Soft-Seat Disk Available in Buna, Viton® or Polyurethane)
- Installation Flexibility Including Rotation of Diaphragm Case

Model 5646



Model 5646 Pressure Regulator

Self-operating pressure reducing regulator, equipped with an integral pitot (boost) tube for increased flow capacities and stability, provides economic control of natural gas, air and other gasses in commercial and industrial applications.

Features

- Rugged Construction, Non-venting
- Inlet Pressures to 6000 PSIG
- Variety of Flow Capacities
- NACE MR0175/ISO 15156 Compatibility

Model 5660

Model 5670



Model 5660/5670 SS High Pressure Regulator

Designed to reduce high inlet pressures to working pressures.

Hydroseal

Product Summary



Hydrosal High Performance, Economy and Pilot Valve Series

Features

- Versatility to Handle Air, Gas, Steam & Liquid Service with the Same Configuration & Trim
- Both Flat Lapped Metal-To-Metal Seat & Bubble Tight Soft Seat Designs Available
- Manufactured in Accordance with ASME Code Section VIII, NBBI Capacity Certified
- Pressure Ranges from 5 PSI to 6173 PSI
- Temperature Ranges from -320 °F to +800 °F

Series 1500 Threaded & Flanged Safety Relief Valves

Series 1500



Features

- Same Internals for Air, Gas, Liquid & Steam Service Applications
- Self Aligning Disc & Guided One-Piece Disc Holder Assembly
- Interchangeable Discs for Metal-To-Metal & Soft Seat Seals
- Meets Fire Safe Designed & Tested to: API 526 & API 527 with Available Orifices "D" through "T"
- Available with NACE MR0175/ISO 15156 & Bellows Option
- Manufactured in Accordance with ASME Code Section VIII, NBBI Capacity Certified
- Replaceable O-Ring Soft Seats

Series 2500 Flanged High Capacity Safety Relief Valves

Series 2500



Features

- ½"-2" Inlets
- Pressures to 2000 PSI
- ASME UV Code Stamped for Gas & Liquids
- Same Design for Gas & Liquids
- Soft Seat Design for Bubble Tight Service
- The Ideal SRV for Both OEM, Gas Compression, Separators, Dehydrators, Gas Production Units & Similar Applications

Series 1200 & 1400 Oilpatch Safety Relief Valves

Series 1200

Series 1400



Features

- Snap Acting & Modulating Options Available
- API Orifice Sizes "D" through "T"
- Air & Gas Applications
- Replaceable O-Ring Seals
- Meets API 526 & API 527
- Meets API Class 150 through 2500 Flange Ratings

Series 3500 Pilot Operated Relief Valves

Series 3500



Hydroseal Ball & Seat/High Capacity and Special Applications

Features

- Ideal for Economical Low Flow Overpressure Protection
- Incorporates Hydroseal's "Self-Seeking Seat" Design
- ASME UV Code Stamped for Air & Gas
- 1/4"-1" NPT Inlet Sizes, Operating Temperatures to 450 °F

Series 1-4 Ball & Seat Threaded Safety Relief Valves

Series 1-4



- 1 1/4"-2" Inlet Sizes
- Incorporates Hydroseal's "Self-Seeking Seat" Design
- Viton® Soft Seat Option Provides Primary Seal with a Metal-To-Metal Secondary Seal
- Manufactured in Accordance with ASME Code Section VIII, NBBI Capacity Certified
- ASME Sec VIII UV Code Stamped for Air & Gas (Non-Code Liquid)

Series 5-8 Ball & Seat Safety Relief Valves

Series 5-8 Thread



Series 5-8 Flanged



- Disc & O-Ring Soft Seat Design Provide High Flow
- Bubble Tight Seal for Various Relief Applications
- Inlets from 3/4"-2" with Set Pressures to 3500 PSI
- ASME Semi-Nozzle Fixed Blowdown Valve

Series FT, HC (Air) & HD (Liquid) Threaded and Flanged Safety Relief Valves

Series FT



Series HC



- Compact Affordable Alternative for Air, Gas & Liquid Service Under 300 PSI
- Available in 1/2"-3" Inlets
- Ideal Overpressure Protection for Steam Boilers, Sterilizers, Distillers, Cookers, Piping Systems & Unfired Pressure Vessels

Bronze Safety Relief Valves

Series 78/79



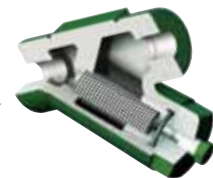
Series 68/69



- For High Pressure Applications Requiring an Easy Maintenance, Collapse Resistant Screen
- In-Line Cleanout Access
- Spiral Wound Stainless Steel Screen
- 1/2"-2" FNPT & SW, Pressures to 3000 PSI

High Pressure "Y" Strainers

"Y" Strainer



- 1/2"-2" FNPT & SW
- Pressures to 3000 PSI
- Operating Temperatures to 400 °F
- Easy Service Cartridge Barrel Design
- For Applications Requiring a High Pressure Easy-To-Maintain Steel Check Valve

High Pressure Ball Check Valves

Ball Check Valve



- For Wellheads, Flow Lines, Pressure Vessels, Water Purification Systems, Steel Mills, Chemical Plants, Waterflood Injection Systems & Reverse Osmosis Systems
- 1/2" MNPT Connection, 316 Stainless Steel Materials, 10,000 PSI Working Pressure
- Mesh Screen Filters Debris, Eliminating Clogs & Reducing Cost of Expensive Gauges
- Bubble Tight Seal, Gauge Hazardous Materials Safely, take Pressure Readings & Sample Line Fluids in Seconds & Troubleshoot Without Breaking Pressure in Lines

Pressure Monitor Plug and Probe

Pressure Monitor Plug



Pressure Monitor Probe



Contromatics

Product Summary



Contromatics Ball Valves

Features

- > Unibody Construction
- > Bottom Loaded Blowout Proof Stem
- > 125 WSP Steam Rating
- > Adjustable Packing Gland
- > Double Reduced Port
- > Oval Handles (Optional)
- > 316 Stainless Steel Ball & Stem (Optional)

Specifications

- > MSS SP-110
- > ANSI B1.20.1

Series 6100-M3



Series 6100-M3

Bronze Body

1/4"-2", 600 WOG, NPT Ends

Features

- > Full Port Thru 3"
- > 150 WSP Steam Rating
- > Bottom Loaded Blowout Proof Stem
- > Adjustable Packing Gland
- > Oval Locking Handles (Optional)
- > 316 Stainless Steel Ball & Stem (Optional)
- > UL & CSA Approved*

*Lever Locking Handle (Standard 1/4"-2")

Specifications

- > MSS SP-110
- > ANSI B1.20.1

Certified

- > CRN
- > UL
- > CGA 3.16

Series 6000-M3



Series 6000-M3

Bronze Body

1/4"-4", 600 WOG, NPT Ends

Contromatics Ball Valves

Features

- > Full Port
- > Locking Handle Standard
- > Bottom Loaded Blowout Proof Stem
- > Adjustable Packing Gland
- > ISO 5211 4-Bolt Mounting Pad
- > 316 Stainless Steel Trim Standard
- > Positive Grounding
- > 150 WSP Steam Rating
- > Oval Locking Handle (Optional)
- > Mineral Filled Seats (Optional)
(250 WSP Steam Rating)

Series 8000-M3



Series 7000-M3 & Series 8000-M3

7000-Carbon Body/Stainless Trim

8000-All Stainless Construction

1/4"-2", 2000 WOG, NPT Ends

Specifications

- > ANSI B1.20.3
- > MSS SP-110
- > ISO 5211
- > NACE MR0175/ISO 15156

Certified

- > CE 1 1/4" & Larger
- > CRN# OC 7841.50126789
- > CSA 6.5
- > CGA 3.16

Features

- > Unibody Construction
- > 316 Stainless Steel Trim Standard
- > Locking Handle Standard
- > Bottom Loaded Blowout Proof Stem
- > Positive Grounding
- > 150 WSP Steam Rating
- > Oval Locking Handle (Optional)
- > Mineral Filled Seats (Optional)
(250 WSP Steam Rating)
- > Adjustable Packing Gland

Series 8100-M3



Series 7100-M3 & 8100-M3

7100-Carbon Body/Stainless Trim

8100-All Stainless Construction

1/4"-2", 2000 WOG, NPT Ends

Specifications

- > ANSI B1.20.3
- > MSS SP-110
- > NACE MR0175/ISO 15156

Certified

- > Fire Safe Designed & Tested to:
API 607 4th Edition
- > CRN# OC 7841.50126789
- > CE 1 1/4" and Larger (Optional)

Features

- > Full Port
- > 2-Piece Seal Welded Construction
- > 316 Stainless Steel Trim Standard
- > Locking Handle Standard
- > Bottom Loaded Blowout Proof Stem
- > Adjustable Packing Gland
- > ISO 5211 4-Bolt Mounting Pad
- > Positive Grounding
- > 150 WSP Steam Rating
- > Oval Locking Handle (Optional)

Series 8200-M3



Series 7200-M3, 8200-M3 & 3200-M3

7200-Carbon Body/Stainless Trim

8200-All Stainless Construction

3200-All Alloy 20 Construction (1/2"-2")

1/4"-2", 2000 WOG, NPT Ends

2 1/2"-4", 1500 WOG, NPT Ends

Specifications

- > ANSI B1.20.3
- > MSS SP-110
- > AAR
- > ISO 5211
- > NACE MR0175/ISO 15156

Certified

- > CE 1 1/4" & Larger
- > CRN# OC 7841.50126789



Contromatics

Contromatics Ball Valves

Features

- > Full Port
- > 3-Piece Construction for Ease of Maintenance
- > Bottom Loaded Blowout Proof Stem
- > Live Loaded PTFE Stem Packing
- > ISO 5211 Direct Actuator Mounting
- > Uniseal™ Seats
- > Mineral Filled Seats (Optional) (250 WSP Steam Rating)
- > Locking Handles
- > Oval Locking Handle (Optional)
- > Positive Grounding

Series 8780-M3



Series 7700, 8700 & 3700

7700-Carbon Body/Stainless Trim

8700-All Stainless Construction

3700-All Alloy 20 Construction (1/2"-2")

1/4"-4", 1000 PSI WOG, NPT & Socket Weld Ends

Specifications

- > ANSI B1.20.3
- > ANSI B16.11
- > NACE MR0175/ISO 15156

Certified

- > CE 1 1/4" & Larger
- > CRN# OC 7841.50126789

Features

- > 3-Piece Construction
- > Operating Pressures to 4500 PSI with Optional Trim Materials
- > All Wall Thicknesses Comply with ANSI B16.34 Class 1500
- > Bottom Loaded Blowout Proof Stem
- > Adjustable Packing Gland
- > Positive Grounding
- > Drilled & Tapped for Actuator Mounting
- > Oval & Locking Handles (Optional)
- > Various Seat Options

Series 8350



Series 8351



Series 7300 & 8300

7300-Carbon Body/Stainless Trim

8300-All Stainless Construction

3/4"-2 1/2", 1500 WOG, Reduced Port, NPT, Socket Weld or Butt Weld Ends

1/4"-2", 1500 WOG, Full Port, NPT, Socket Weld or Butt Weld Ends, ANSI Class 600

Specifications

- > ANSI B1.20.3
- > ANSI B16.11
- > ANSI B16.25
- > ANSI B16.34
- > API 598
- > Fire Safe Designed & Tested to: API 607 4th Edition
- > ASME B31.1
- > NACE MR0175/ISO 15156

Certified

- > CRN# OC 7841.50126789
- > CE 1 1/4" & Larger
- > CGA 3.16

Contromatics Ball Valves

Features

- > 3-Piece 4-Bolt Construction with Enclosed Body Bolts
- > Bottom Loaded Blowout Proof Stem
- > Adjustable Packing Gland
- > Center Section Actuation Mounting
- > ISO 5211 Direct Mount Actuator Mounting Pad
- > Live Loaded High Cycle, TFE V-Ring Style Packing
- > Optional TFE Coated "S" Gasket Body Seals for High Temperature & API 607 Applications
- > Integral Fire Lip
- > Full ANSI Class 600 Wall Thicknesses
- > Locking Handle Standard

Optional Trim Materials Available Seats

- > Uniseal™
- > Mineral Filled PTFE
- > PEEK™
- > Delrin®

Specifications

- > MSS SP-110
- > ANSI B1.20.3
- > ANSI B16.11
- > ANSI B16.25
- > ANSI B16.34
- > API 598
- > Fire Safe Designed & Tested to: API 607 4th Edition

Certified

- > CRN# OC 11383.50126789
- > CGA 3.16
- > CSA 6.5

Available End Connections

- > NPT Ends
- > Socket Weld
- > Butt Weld (Specify Pipe Schedule)
- > Extended Pipe Ends
- > Combinations of Above

Series 7400 & Series 8400

7400 -Carbon Steel Body/Stainless Steel Trim

8400 -All Stainless Steel Construction

NPT, Socket Weld or Butt Weld Ends

$\frac{3}{4}$ "-2 $\frac{1}{2}$ " Standard Port, $\frac{1}{4}$ "-2" Full Port

Operating Pressures to 4000 WOG

Series 8450



Series 8450
Cut View



Contromatics Ball Valves

Features

- > Unibody Standard Port*
- > Blowout Proof Grounded Stem
- > Adjustable Stem Packing for Extended Life
- > Fully Machined Actuator Mounting Pad
- > Optional Materials Available
- > Locking Handle
- > Oval Locking Handle (Optional)
- > 1/2"-1" Spring Loaded Packing

Specifications

- > ANSI B16.10 > API 598
- > ANSI B16.34 > ASME B31.1
- > ANSI B16.5
- > NACE MR0175/ISO 15156

Certified

- > CE Mark 1 1/2" & Larger
- > CRN# OC 7841.50126789
- > CGA 3.16
- > Fire Safe Designed & Tested to:
API 607 4th Edition

Series 2501



Series 1500 & 2500

1501/1503-WCB Body/Stainless Steel Trim

2501/2503-CF8M Body/Stainless Steel Trim

1/2"-8" ANSI Class 150, Flanged End, Standard Port

1/2"-6" ANSI Class 300, Flanged End, Standard Port

* 8" 2-Piece Design

Features

- > 2-Piece Body Design for Ease of Maintenance
- > Full Port
- > Blowout Proof Grounded Stem
- > Adjustable Stem Packing for Extended Life
- > Fully Machined Actuator Mounting Pad
- > Optional Materials Available
- > Locking Handle

Specifications

- > ANSI B16.10 > API 598
- > ANSI B16.34 > ASME B31.1
- > ANSI B16.5
- > NACE MR0175/ISO 15156

Certified

- > CE Mark 1 1/2" & Larger
- > CRN# OC 7841.50126789
- > Fire Safe Designed & Tested to:
API 607 4th Edition

Series 2801



Series 1800 & 2800

1801/1803-WCB Body/Stainless Steel Trim

2801/2803-CF8M Body/Stainless Steel Trim

1"-10" ANSI Class 150, Flanged End, Full Port

1"-8" ANSI Class 300, Flanged End, Full Port

Contromatics Ball Valves

Features

- > Same Materials & Design as Standard Flanged Valve
- > Multiple PTFE V-Ring Style Stem Packing
- > Live Loaded 17-7 Stainless Steel Belleville Spring Mechanism for Increased Sealing Capacity
- > Field Retro-Fit Kit Available
- > Anti-Vibration Nuts on Packing Neutralizes Pipeline Vibration

Specifications

- > ANSI B16.10
- > ANSI B16.34
- > ANSI B16.5
- > API 598

Certified

- > CE 1 $\frac{1}{4}$ " & Larger
- > CRN# OC 7841.50126789
- > CGA 3.16
- > CSA 6.5

Series 1501-S1



Secure Locking Device



Series 1500-S1 & 2500-S1

1 $\frac{1}{2}$ "-8", ANSI Class 150, Flanged End, Std. Port

1"-8", ANSI Class 150, Flanged End, Full Port

1 $\frac{1}{2}$ "-6", ANSI Class 300, Flanged End, Std. Port

1"-8", ANSI Class 300, Flanged End, Full Port

Contromatics Pneumatic & Electric Actuators

Features

- > Rack & Pinion Design
- > Fully Encapsulated Springs for Safety
- > Mounting Dimensions to ISO 5211
- > Hard Anodized Extruded Aluminum Body Painted with Powder Epoxy Polyester Paint
- > Nickel Plated & Stainless Steel Units (Optional)
- > Double Travel Stops Standard
- > Easily Converted from Double Acting to Spring Return
- > Accessory Mounting Dimensions to NAMUR Specifications
- > -10°F to 195°F Optional -55°F to 250°F

Series PA



ISO 5211 Mounting Pattern



Series PA/PAS M5

Pneumatic, 15 Sizes,
In 90° & 180° Rotation

From 200 in./lbs. to 37,200 in./lbs.

Specifications

- > ISO 5211
- > NAMUR

Certified

- > CGA 6.5
- > Factory Mutual

Features

- > Combination NEMA IV, VII & IX Enclosure
- > Protective Hybrid Epoxy Coating
- > Stainless Steel Cover Bolts
- > Split Phase Reversing Motor with Thermal Overload Protection
- > 4140 Hardened Steel Gear Drive
- > Highly Visible Position Indicator
- > Dec clutchable Manual Override
- > 16-Point Terminal Strip

Optional Features

- > Electro-Mechanical Motor Brake
- > Auxiliary Limit Switches (2)
- > Heater/Thermostat
- > Extended Duty Cycle Motors
- > 4-20 MA Positioner Board
- > Cycle Length Control Module
- > Center Off Operation
- > 120VAC, 220VAC, 12VAC, 24VAC, 24VDC, 12VDC
- > Multi-Turn Operation
- > Failsafe Capability
- > 0-1000 OHM Feedback Potentiometer

Series 92



Series 92

Reversing Electric Actuator

4 Models, from 400 in./lbs.
to 2000 in./lbs.

Specifications

- > NEMA
- > Class I Group C & D
- > Class II Group E, F & G
- > NEMA 4, 7 & 9

Certified

- > CSA

Features

- > 360° Limit Switch Adjustability
- > ISO 5211 Mounting
- > F03, F05 and F07
- > Manual Override Standard
- > Permanently Lubricated Gears and Bearings
- > Extra Switch, Heaters/Thermostats Available
- > 115 VAC 60 Hz, 230 VAC 60 Hz
- > ½" NPT Conduit Connections
- > NEMA 4 and 4x
- > Hardened Steel Gearing
- > 75% Duty Cycle @ 105°F

Series EA 600



Series EA 600

Unidirectional Electric Actuator

Torque Output 600 in./lbs.

115 VAC & 230 VAC

Specifications

- > NEMA 4 & 4X

Contromatics Automation Accessories

Features

- Convertible from 3-Way to 4-Way
- 35 to 150 PSI Operation
- -20°F to 180°F, Option to 300°F
- Optional Voltages Available
- NAMUR Mount
- NEMA 4, 4X, 7 & 9 Enclosures*
- Block Mounted Solenoid
- UL, FM & CSA Approved

BMS Solenoids

BMS-2N Solenoid



Features

- Pneumatic & Electric Pneumatic
- High Gain Pilot Valve
- Built in Gauge Ports
- Stainless Steel Cam
- Tapped Exhaust Port
- Sturdy, Simple, Reliable Design
- Easy to Add on Feedback Unit F5
- Simple Calibration, External Zero Adjustment
- Bright Visible Indicator, Flat or Dome Style

PMV Positioners

PMV-EP5 Positioner



Features

- Highly Visible Position Indicator
- Co-Polyester; Eastar® Housing
- Aluminum & Stainless Housings Available
- NAMUR Direct Mountable
- NEMA 3, 4, 4X, 7 & 9 Enclosures*
- Mechanical, Inductive & Proximity Switches
- Precise Cam Positioning
- Easy Wire Termination

Contromatics Limit Switch

Contromatics Limit Switch



NAMUR Direct Mount



Features

- Highly Visible Position Indicators
- Mechanical & Proximity Switches
- NEMA 4, 4X, 7 & 9 Enclosures*
- Resin & Aluminum Housings
- Prewired Terminal Block
- UL, FM & CSA Approved

**Varies Depending on Model*

LS Model Limit Switch

Series LS-3N





CIRCOR Energy is a global manufacturer of highly engineered valve and pipeline products that continuously develops precision technologies to improve our customers' ability to control the flow of the world's natural resources, from sub-sea to land, and in severe environments.

Continuously Improving Flow Control. Worldwide.

United States

1500 S.E. 89th St.
Oklahoma City, OK 73149
Tel: 405.631.1533
Fax: 405.631.5034
sales@circorenergy.com

Houston Sales

Tel: 832.912.8333
sales@circorenergy.com

Canada

Calgary
Suite 2604, 308 4th Ave. SW
Calgary, Alberta T2P 0H7
Tel: 403.705.7216
Fax: 403.266.5088
sales.canada@circor.com

Edmonton

9430-39th Avenue
Edmonton, Alberta T6E 5T9
Tel: 780.463.8633
Fax: 780.461.1588
sales.canada@circor.com

China

10# Qun Xing San Road
Loufeng District Suzhou
Industry Park
China Post Code: 215006
Tel: +86 512 62516088
Fax: +86 512 62513119
sales.china@circor.com

Asia Pacific

10 Woodgrove View
Singapore 738113
Tel: +65 63101595
Fax: +65 62691973
sales.asia@circor.com

Brazil

1480, Eugenio Losso District St.
Unileste - 13422-180
Piracicaba - Sao Paulo - Brazil
Tel: +55.19.3124-3124
Fax : +55.19.3414-3722
sfvalvulas@circor.com.br

Latin America

1500 S.E. 89th St.
Oklahoma City, OK 73149
Tel: 405.631.1533
Fax: 405.631.5034
sales@circorenergy.com

U.A.E.

P.O. Box: 263202
Unit FZS5 AA01
Jebel Ali Free Zone
Dubai, UAE.
Tel: +971.4.8866128
Fax: +971.4.8866129
sales.dubai@circor.com



www.circorenergy.com

©2012 CIRCOR Energy. All rights reserved.
CE-KMHC-PS-MAR-2012-SFA-HP